

# Ceramic Urinal with the Radar Flushing Unit SLP 35RS



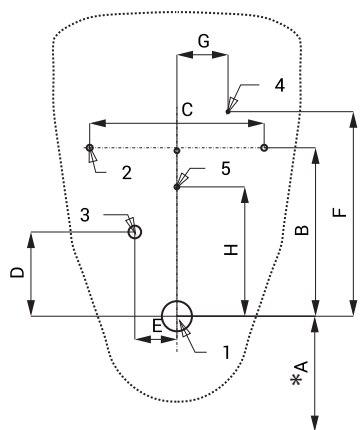
SLP 35 - INKER

## Characteristics



- **economy flushing by 1 liter of water**
- easy installation by the help of paper drill template
- whole flushing unit is placed behind the urinal
- system reacts only on the direct use of the urinal (it analyses changes, which are proceeded inside of the urinal, when a liquid is flowing through)
- adjustable flushing time 0,5 - 15,5 s
- parameters adjustment by remote control SLD 04 without the necessity to dismantle the urinal from the wall (acoustic setting indication)
- automatic flushing after each 6 hours non-use
- monitoring of battery capacity (for models with index B)
- possibility to regulate a water flow by the ball valve
- radar flushing unit recharges a water to the siphon after each flushing

## Installation Drawing



- 1 - water outlet Ø 50 mm  
2 - holes for fitting  
3 - water supply  
4 - power supply 24 V DC or 230 V AC  
5 - holes for wall plug

Dimensions (mm)	A	B	C	D	E	F	G	H
SLP 35 - INKER	405	280	290	140	70	340	85	215

\* for the height of the front edge of the urinal 650 mm above the floor

## Supply Specification

SLP 35RS	-	<b>Supply No. 11355</b>	ceramic urinal with the radar flushing unit on the mounting rail, electromagnetic valve,
SLP 35RZ	-	<b>Supply No. 01355</b>	connecting hoses, angle valve with filter and check valve, inlet fitting with a rubber
SLP 35RB	-	<b>Supply No. 11357</b>	sealing, siphon, paper drill template, power supply (SLP 35RZ), 4 pcs. AA alkaline
			batteries 1,5 V, 2700 mAh with battery case (SLP 35RB)

## Recommended Accessories

SLZ 01Y	-	<b>Supply No. 05012</b>	power supply 24 V DC for operating of max. 5 pcs. of flushing units
SLZ 01Z	-	<b>Supply No. 05011</b>	power supply 24 V DC for operating of max. 9 pcs. of flushing units
SLZ 04Y	-	<b>Supply No. 05042</b>	power supply 24 V DC on DIN rail, for operating of max. 5 pcs. of flushing units
SLZ 04Z	-	<b>Supply No. 05041</b>	power supply 24 V DC on DIN rail, for operating of max. 9 pcs. of flushing units
SLZ 04X	-	<b>Supply No. 10049</b>	power supply 24 V DC on DIN rail, for operating of max. 15 pcs. of flushing units
SLZ 06	-	<b>Supply No. 05060</b>	power supply 24 V DC for operating of max. 1 pc. of flushing unit
SLD 04	-	<b>Supply No. 07040</b>	remote control for an adjustment of parameters
SLA 11	-	<b>Supply No. 06110</b>	deodorising urinal screen - orange colour, mango scent
SLA 11A	-	<b>Supply No. 06111</b>	deodorising urinal screen - red colour, kiwi and grapefruit scent
SLA 11B	-	<b>Supply No. 06112</b>	deodorising urinal screen - transparent colour, honeysuckle scent
SLA 11C	-	<b>Supply No. 06113</b>	deodorising urinal screen - blue colour, cotton bloom scent
SLR 01L	-	<b>Supply No. 08010</b>	plasterboard frame for urinal with mounting box behind the urinal
SLA 36	-	<b>Supply No. 06360</b>	set of 4 pcs. alkaline batteries AA 1,5 V, 2700 mAh (for models with index B)

## Technical Specification

### Operating voltage

- SLP 35RS 24 V DC
- SLP 35RZ 230 V AC/50 Hz
- SLP 35RB 6 V

### Power input

- operating by 24 V DC 8 W
- operating by 6 V 3 W

### Recommended flow pressure

- 0,1 - 0,6 MPa

### Rate of flow

- 18 l/min (inf. data)

### Water inlet

### Water outlet

- male thread G 1/2"

- inlet fitting with a rubber sealing

